

## Essential Nail Care

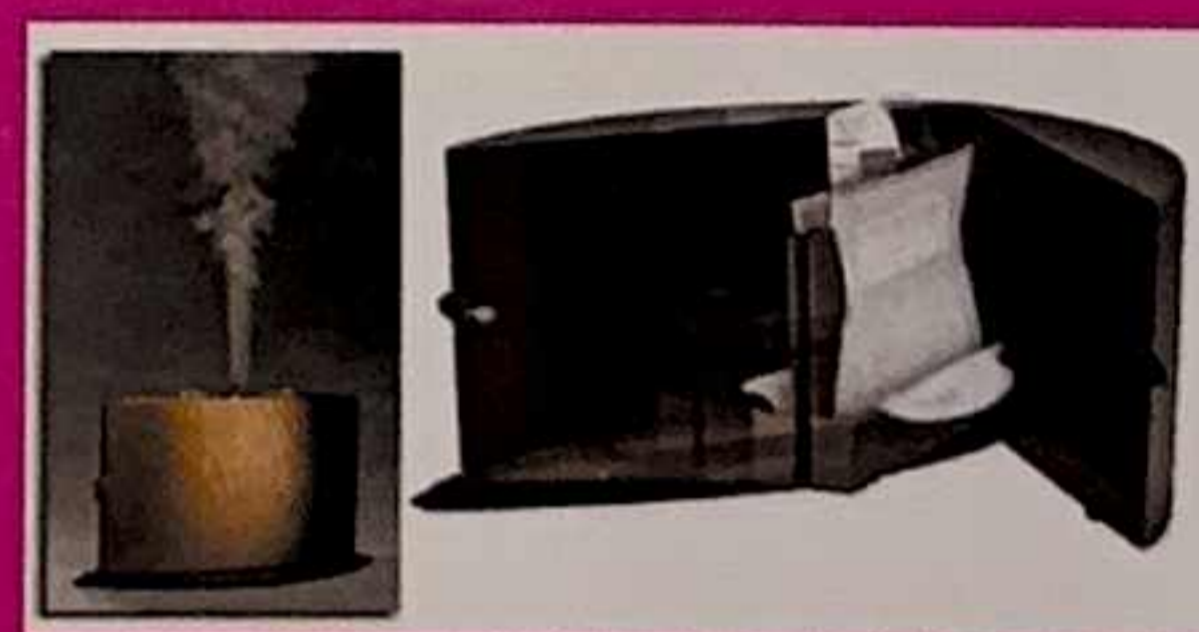
|  | Mani  | Pedi  | Combi |
|--|-------|-------|-------|
| Vital Gloss - (nail shaping, buffing, cuticle care, polish)  | 70    | 75    | 140   |
| Express Gloss - (Nail shaping, Shiny Buff, Polish)   | 50    | 55    | 100   |
| Polish Change  | 40    | 45    | -     |
| <b>Little Miss Sparkle</b> (For young girls 10 years old and under)<br>French Finish (Add 15 each) / Quick dry (Add 5 each)<br>"(Please note that the standard time for mani and pedi is 45 minutes should the client request additional time other than the standard time of 45 mins additional charges will be applied)" | 30/35 | 40/45 | 70    |



## Hand and Foot Treatment

### PERFECTSENSE PARAFFIN

Very hygienic, a luxurious treatment, a disposable 2 Gloves filled with the Antioxidant Paraffin Blend, a Lavender Aromavapor Solution, and 1 Heater pouch. Antioxidant Blend, White tea grape seed extract and Berry Blend help promote cellular renewal and help protect against sun and age damage

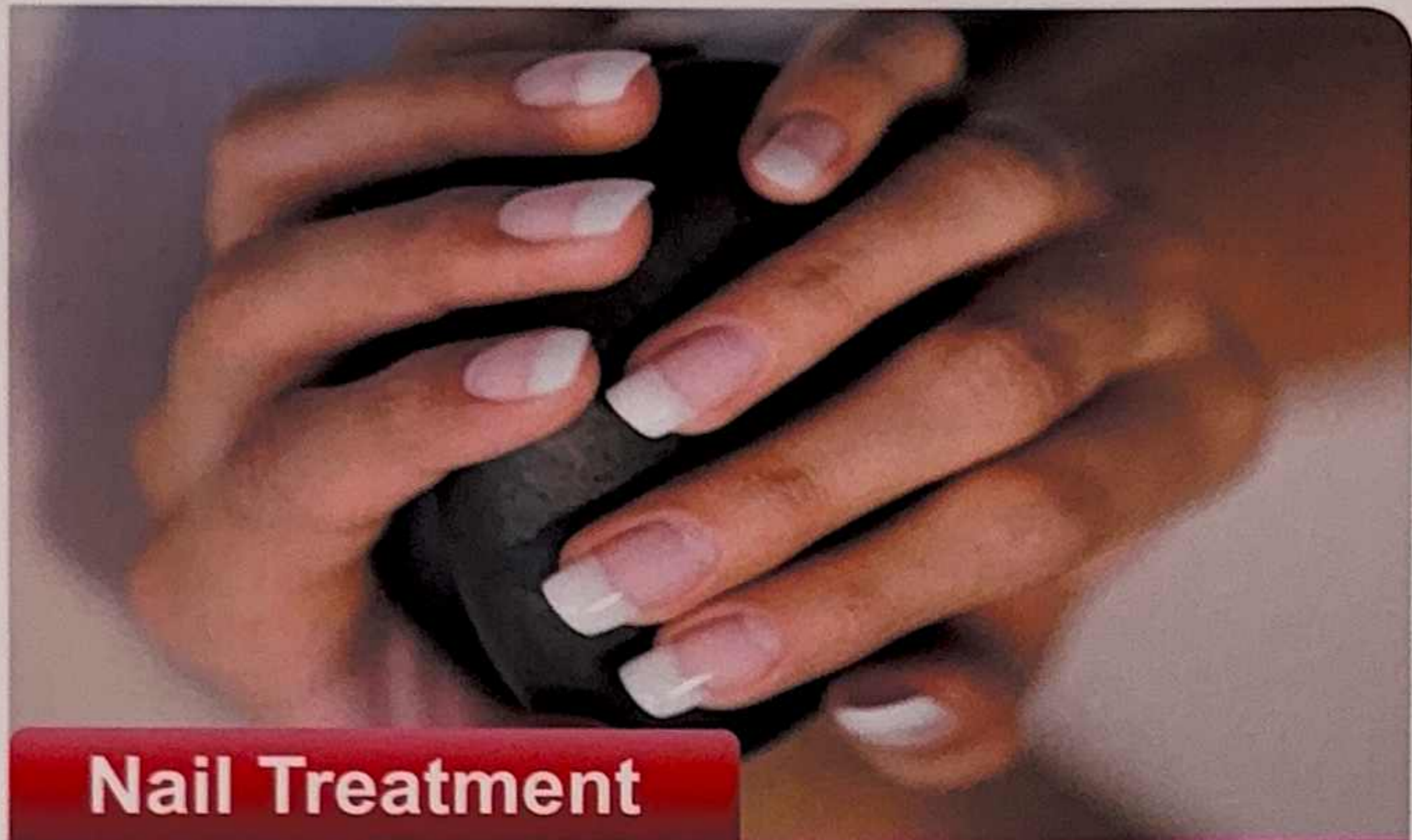


|   | Mani | Pedi | Combi |
|---|------|------|-------|
| PerfectSense Paraffin Treatment (with Manicure and Pedicure)  | 165  | 185  | 310   |
| PerfectSense Paraffin Treatment (without Manicure and Pedicure)   | 95   | 100  | -     |
| Hand Scrub / Foot Scrub   | 55   | 60   | -     |
| <b>FootCare Logix Pedicentials</b> (Dermal Infusion Technology)<br>Deep treatment for dry skin footlogix Pedicential new and effective technology for skin smoothness seep effectively removes cracks deep ad dry skin. |      | 100  |       |

### Drenelle Relaxing Foot Care (Light & Slender Legs)

New treatment for tired and swollen feet due to cellulite. With immediate long lasting natural relief, active microcirculation, draining agent, for blood circulation, pregnancy, heavy, burning, aching & pain in your legs.

|                         |  |     |  |
|-------------------------|--|-----|--|
| Treatment with Pedicure |  | 175 |  |
| Treatment only          |  | 125 |  |



## Nail Treatment

### IBX Nail Treatment

A revolutionary treatment and effective for the growth and broken nail; works to strengthen and removes white spots

### BS Brace Treatment

(for ingrown nails)  
Say goodbye for ingrown nail-Efficient treatment of ingrown toenails

### Yellow Nail Treatment



**BS**  
*SPINGE*  
**Classic**

A Professional Nail Salon Service



## Price

AED 80 (first time)

AED 50 (follow up)

AED 150 (1 toenail)

AED 250 (Both toenail)

AED 45

## Nail Enhancement (Gel, L&P)

|                                | Gel / L&P | Silk      |
|--------------------------------|-----------|-----------|
| French / Natural Tips          | 350 / 330 | 350 / 330 |
| Refill Full Set / Nat / French | 225 / 280 | 225 / 280 |
| Rebuff / Soak-off removal      | 100       | -         |
| French / Natural tip repair    | 45 / 40   | 45 / 40   |
| Remove per nail                | 15        | -         |
| Temporary nails (Full set)     | 120       | -         |

## Gel Polish over Natural Nail Only

### Good bye to dry time & welcome to Zero Dry Time

14 days glorious shine, Strong Protected Nails  
Shellac system features a Base Coat, Colour and Top Coat.  
It remains shiny for 2 weeks and removes in 10 minutes

**Gel Mani - AED 145**

**Gel Pedi - AED 165**





### Nail Art

|                    | Rate                  |
|--------------------|-----------------------|
| Free Hand Nail Art | Starting at AED 10    |
| Dried Flowers      | Starting at AED 12    |
| Crystals           | Starting at AED 10-12 |
| Gel Nail Art       | Starting at AED 15-50 |

### Bio Sculpture Gel / Nail Treatment Gel



|                            | AED       |
|----------------------------|-----------|
| French / Color Set Moulded | 410 / 340 |
| Natural Set Moulded        | 320       |
| Overlay Color Set          | 290       |
| Overlay Natural Set        | 260       |
| Refill Colour              | 230       |
| Clear French Refill        | 195       |
| Everlasting Mani           | 195       |
| Everlasting Pedi           | 225       |
| Lavander Base Treatment    | 170       |
| Soak off (Full Set)        | 100       |
| Soak off (1 Nail)          | 10        |



## Spa **MANICURE & PEDICURE** Services specialized treatment for your **HANDS & FEET**

### **Salt Of The Earth Hand Spa**

- Mineral Salt – Pure salt crystals infused with one of our signature lush fragrances for relaxing manicure.
- Creamy Scrub – Soften and condition skin with moisturizing shea butter, a perfect exfoliation of sugar and salt crystals and skin conditioning extracts.
- Mineral Mud – Rich mask leaves skin light and luminous using naturally gentle Kaolin Clay to purify, nourish and revitalize.
- Mineral Cream – luxurious, decadent Mineral infused Whipped Body Cream with healing properties of Grapeseed Oil, Vitamin A and E to rebuild collagen and repair damaged skin.

### **BCL Brightening Foot Spa**

- Brightening Salt Soak – help to diminish dark spots, even skin tone and control melanin pigmentation
- Brightening Sugar Scrub – Argan oil and pure Sugar, illuminate the skin's natural glow, gently exfoliates and moisturizes the skin, leaving it soft and silky.
- Brightening Moisture Mask – Argan Oil and bentonite clay + kaolin clay restores the skin's natural hydration and deeply nourishes the skin.
- Massage Cream – Milk and Honey with White Chocolate rich with Argan Oil heals, conditions, and regenerates the skin, leaving it smooth and hydrated.



| <b>Eyelash Extension</b> | <b>AED</b> |
|--------------------------|------------|
| Eyelash Extension        | 500        |
| Eyelash Removal          | 250        |
| Eyelash Refill           | 250        |
| Eyelash Tint             | 85         |
| Eyebrow Tint             | 70         |

### **Threading**

|                 | <b>AED</b> |
|-----------------|------------|
| Eyebrow Shaping | 30         |
| Upper Lip       | 15         |
| Chin            | 15         |
| Half Face       | 35         |
| Full Face       | 65         |

### **Bleaching**

|                        | <b>AED</b> |
|------------------------|------------|
| Eyebrow Bleaching      | 35         |
| Full Face Bleaching    | 65         |
| Full Arm Bleaching     | 75         |
| Full Leg Bleaching     | 85         |
| Full Body Bleaching    | 230        |
| Full Back Bleaching    | 60         |
| Full Stomach Bleaching | 60         |

### **Wax-On, Wax-Off**

|                                     | <b>AED</b> |
|-------------------------------------|------------|
| Half Arms                           | 50         |
| Full Arms                           | 60         |
| Underarms                           | 35         |
| Half Leg                            | 65         |
| Full Leg                            | 95         |
| Bikini Line / Full Bikini Line      | 45 / 75    |
| Semi or Full Brazilian              | 85 / 95    |
| Hollywood                           | 185        |
| Fingers or Toe Thread               | 8          |
| Half Back or Chest                  | 40         |
| Full back or Chest                  | 75         |
| Stomach Line / Full Stomach         | 40 / 75    |
| Full Body (Exc. Brazilian & Face)   | 260        |
| Head to Toe (Inc. Brazilian & Face) | 390        |



## Massage - Body Treatment



### Hand Reflexology

### Foot Reflexology

The foot massage itself can promote relaxation and Relieve stress. Foot Reflexology also help improve Concentration and memory, relieve sinus congestion And migraines and improve sleep quality

### Head Massage

### Therapeutic neck & Shoulder

### Therapeutic Back Massage

| Period  | Price  |
|---------|--------|
| 15 mnts | AED 60 |
| 15 mnts | AED 65 |
| 15 mnts | AED 60 |
| 15 mnts | AED 70 |
| 30 mnts | AED 85 |

## Body - Gloss / Scrub

Polish your body and set the glow on your skin with our unique body polish, perfect exfoliant to remove dead cells. The body treatment will conclude with a complete moisturizing application of body hydrator, leaving your skin soft, supple.

**Duration: 30 Mints - AED 200**



## Full Body Relaxing Massage

It is a soothing experience that is helpful for stress-relief. The specific reflex points are targeted correctly by a reflexologist, the benefits can be remarkable, including relief from migraines, circulatory and digestive issues, sinus problems and more. In general, any organ of the body with a correlating reflex point can be improved through regular reflexology treatments.

**Duration: 50/80 Mnts - AED 280/300**



## Hot Stone Massage

### Hot Stone Foot Massage

**Duration: 20 mnts - AED 80**

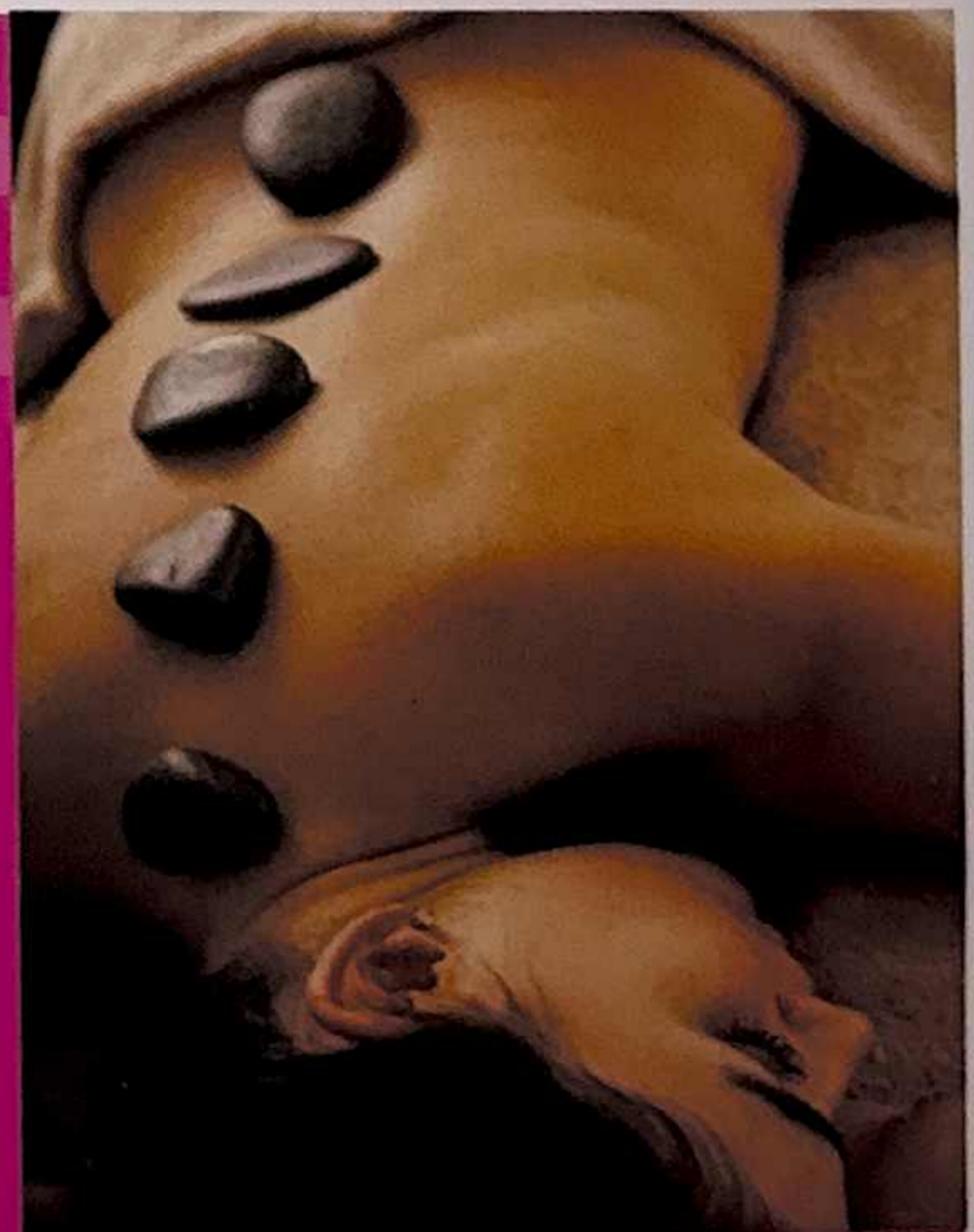
### Hot Stone Back Massage

**Duration: 30 mnts - AED 100**

### Full Body Hot Stone Massage

Hot Stone Massage , helping to create a deep tissue massage to work tight, knotted, it warms the skin and surrounding muscles to help release tension and increase blood flow. Placing and kneading hot stones over muscles helps increase an area's circulation and blood flow to stimulate healing to painful or damaged muscles. The deep tissue massage and heat of the stones also aid in the ability to move toxins and waste through the body, it promotes relaxation, eases stress and anxiety, as well as alleviates muscle aches and back pain

**Duration: 50 mnts - AED 320**



## Lava Shell Massage



Lava Shell Massage provides deep relaxation and acts as a natural colonic on the digestive system. The heat from the Lava Shells stimulates the blood supply resulting in healthier looking skin whilst the deep tissue pressure point massage eases away muscle tension.

Massage therapy is an art which stimulates your senses, relax the muscles and allow the body to relax and heal itself. This sea shells are made of calcium carbonate the same substance that strengthens our bones and teeth.

Lava Shell Massage relieves tired muscles and improves circulation so you feel and function better.

So if you want to do something different, exotic and special just have a try and experience the beauty of a sea shell massage.

|                              |         |         |                         |         |         |
|------------------------------|---------|---------|-------------------------|---------|---------|
| Full Body Lava Shell         | 50 mins | AED 350 | Lava Shell Head Message | 15 mins | AED 85  |
| Lava Shell Back Massage      | 30 mins | AED 120 | Lava Shell Leg Message  | 30 mins | AED 120 |
| Lava Shell Neck and Shoulder | 15 mins | AED 85  | Lava Shell Foot message | 15 mins | AED 85  |

## Dead Sea Ultra-Hydrating Ritual



A unique Grape Seed Body Scrub and Grape Seed Body Masque treatment infused with Dead Sea Minerals which improves skin's appearance, cleanses, stimulates, relaxes and moisturizes the entire body, followed by a full body massage to complete this wonderful and deeply comforting treatment.

**Treatment only AED 300**

**Treatment with FULL BODY MASSAGE AED 450**



## Full Body Shiatsu Massage

Shiatsu involves applying pressure to special points or areas on the body in order to maintain physical and mental well being, treat disease, or alleviate discomfort. Shiatsu has a strong reputation for reducing stress and relieving nausea and vomiting. Shiatsu is also believed to improve circulation and boost the immune system.

Some people use it to treat diarrhea, indigestion, constipation, and other disorders of the gastrointestinal tract; menstrual and menopausal problems; chronic pain; migraine; arthritis; toothache; anxiety; and depression. Shiatsu can be used to relieve muscular pain or tension, especially neck and back pain.

It also appears to have sedative effects and may alleviate insomnia. In a broader sense, shiatsu is believed to enhance physical vitality and emotional well being.



**Duration: 50/80 mnts - AED 300/330**

**Package of 10 full body shiatsu massage 50/80 minutes - AED 2,500**



## Citrus C - Vitamin C (Deep Cleansing Facial)

Pure vitamin C from fresh pink grapefruit, lime, grapes and rosehips to repair and brighten the skin. Cooling cucumber and mint help to calm the skin after extractions.

Hungarian Firming Face Massage is included.

\*With steam.

*For all skin type.*

**Duration: 60 mnts - AED 380**

### ORGANIC FACIAL TREATMENTS







## Age Defying Firming Facial



Defy gravity with this ultimate age defying facial, Firming, antiaging renew skin, stimulates collagen+elastin, working deep into the skin. Delicious cantaloup, citrus and persimmon are combined with the powerful botanical blend Zirhafirm with combination of wild jujuba and maral root that restructures and firms the skin with active visible results! revitalized skin in instantly lifted while fragila sagging skin disappears leaving a firm glowing skin! Hungarian Firming Face Massage is included.

*(Firming anti-aging - normal / dry / combination)*

**Duration: 75 Mnts - AED 500**

## LPG - New Endermolift - Face Revolution Care



Activated Hyaluronic Acid,  
Collagen and Elastin  
Refines skin texture  
Balance out volumes  
Slow collagen destruction  
100% Natural, visible result from  
the 1st session

After that your skin is evaluated  
and identify cosmetic goals will  
give you a program in tune with

your needs that includes multiple and diverse sessions commensurate with the nature and needs of your skin.

**Session from 6-12  
(price at the reception)**



## Sweets Cheeks

**Hydrating hyaluronic for skin quenching and replenishing skin's moisture**

This juicy collection will reawaken dry, thirsty skin with the help of fresh strawberries and rhubarb while marshmallow plant derived hyaluronic acid deeply penetrates to deliver a refreshing boost of hydration. Oxygenating cucumber and parsley lightens and brightens to make this a revitalizing summer facial.

(good for bridal & party)

*(Normal to dry, normal combination, Dehydrated, sensitive)*



**Duration: 75 mnts - AED 500**

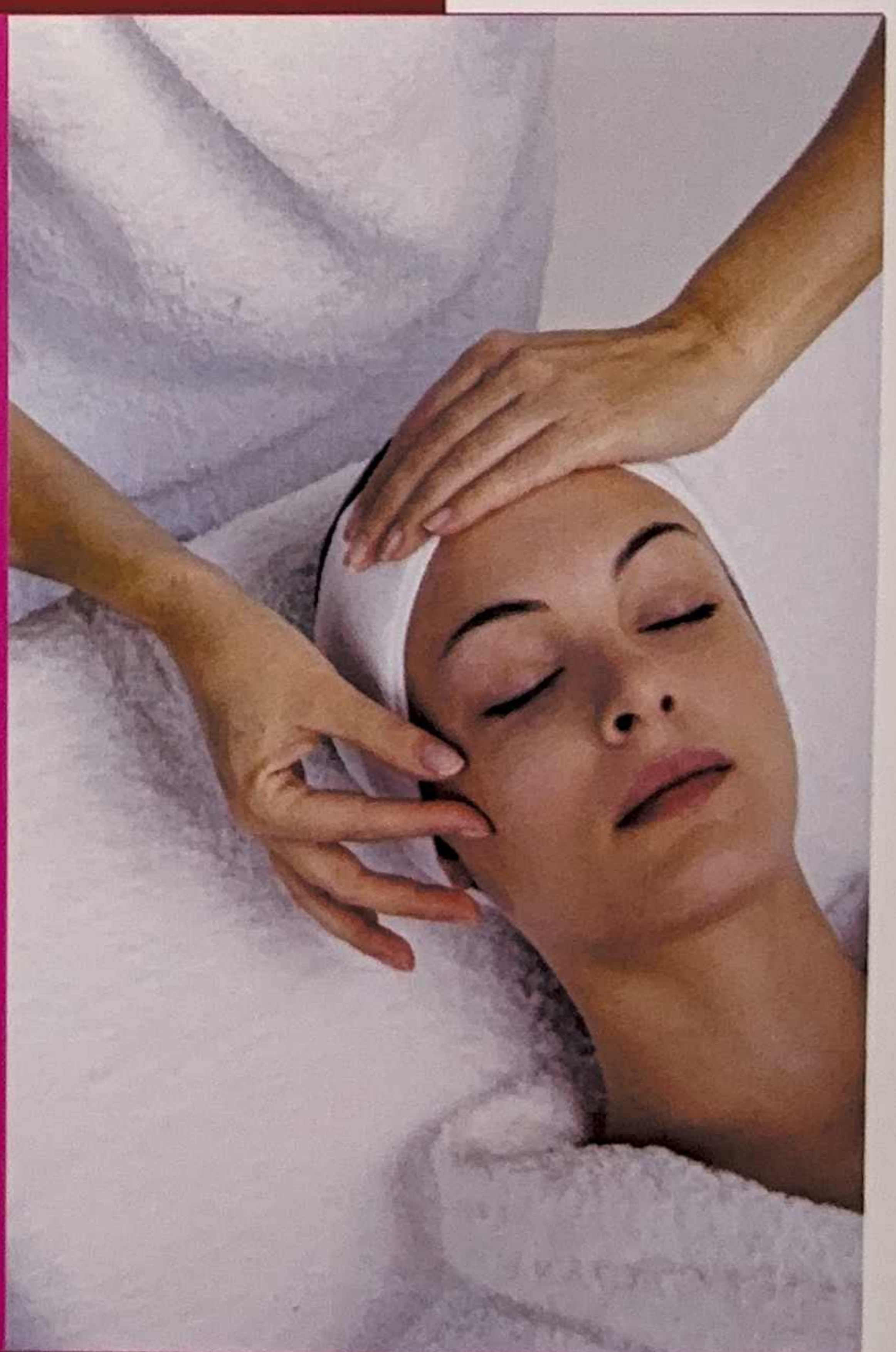
## Modeling Hyaluronic Wrinkle Treatment

Over the years the skin becomes marked with wrinkles and slackens, **The reduction in collagen increases and the skin's ability to produce hyaluronic acid diminishes.** The skin thus becomes thinner, dehydrated and **wrinkles become deeper.**

Our modelling treatment help Retains water in the skin ,with a feeling of Micro-Sponge» effect ,working deeply to smooth the epidermis .

As a result the skin is well hydrated, fine lines are smoothed, the most heavily marked wrinkles are reduced, lines are less marked. The face is younger, the feeling of a "good-as-new" skin effect (for best result its recommended 6 sessions: 1 session per week)

**Duration: 75 mnts - AED 500**

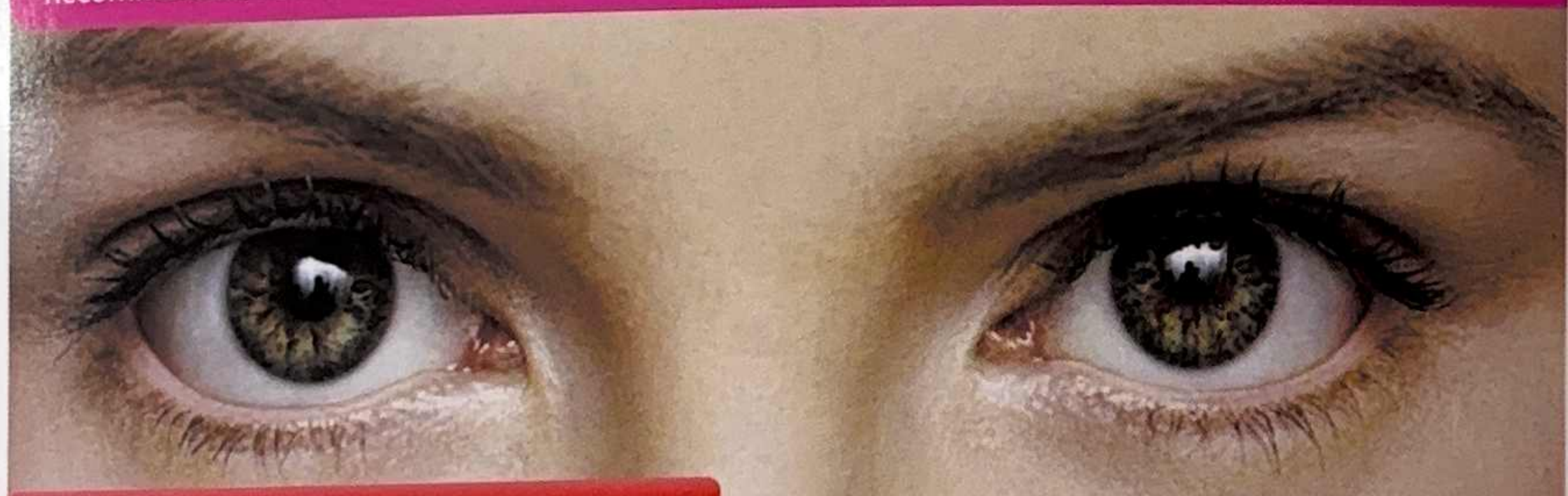


## Bright Eyes Treatment

An intense treatment for the delicate eye area. Includes gentle exfoliation. Vitamin rich Raspberry Eye masque together with a relaxing de-stressing massage to relieve tired eyes. A treatment that gently but effectively minimizes fine lines, wrinkles, milia, crow's feet, puffiness, lack of skin tone and dark circles around your eye area.

*(A good add on treatment for all above facials.)  
Recommended course of 6 treatments*

**Duration: 60 mnts - AED 250**



## Collagen Eye Treatment

Collagen eye treatment work to change the image of your eyes in just one application. Is a cure for anti-wrinkle and anti-puffiness around the eyes and the blackness that regenerate the skin through ripples with high doses of vitamin cranberry and collagen for cell renewal lotion with glycolic acid and enzymes helps to stimulate cell turnover and right around the eyes.

**Duration: 60 mnts - AED 280**

## Makeups



### Normal Makeup

**AED 350**

### Normal makeup with eyelashes

**AED 450**



### Special Makeup

Attractive Package for the Bride will be arrange upon request

**AED 650**

### Eyeshadow with eyelashes

**AED 200**





## Glamour Blow Dry

- Blow Dry Short AED 65
- Blow Dry Medium AED 85
- Blow Dry Long AED 100 (Very Long - 150)
- Blow Dry with Ceramic Short AED 85
- Blow Dry with Ceramic Medium AED 100
- Blow Dry with Ceramic Long AED 125 (Very Long - AED 180)



Please note: Prices are not fixed, it could be change according to hair Type, Length & Volume.

## Glamour Hair Color

- Full Hair Color Short AED 300
- Full Hair Color Medium AED 400
- Full Color Long / Very Long AED 500 / 600
- Root Color AED 150 / 200



Please note: These Prices are not fixed, it could be change according to Hair Type and if required Bleaching or extra hair color tubes

## Highlights

- Highlight Short AED 280
- Highlight Medium AED 400
- Highlight Long AED 500
- Highlight Root AED 150 / 200



## Glamour Hair Cut

- Hair Trimming AED 70-100
- Little Girl AED 50
- Hair Cut AED 150
- Cut Fringe AED 40
- Cut Fringe with Sides AED 80



## Glamour Hair Style



- Normal Hair Style AED 250
- Special Hair Style AED 350
- Bridal POA Upon Request

## Glamour Hair Treatments

- MaxCare Mask with Serum AED 250  
(Rich mask for dry, dull, damage hair)
- Olaplex Hair Treatment AED 280  
(Permanently rebuild damaged hair)



## Silicone Hair Treatment

Very rich treatment for weak, brittle, dry/damaged hair, it Add volume, softens, shines, straightens, a result; a healthy hair, excellent for getting rid of curly, frizzy, unhealthy, dull, mistreated hair.

- Short AED 800
- Medium AED 1200 / 1500
- Long /very long AED 2000 / 2500



## Collagen with Protein Treatment

For damage, weak, pale and unhealthy hair.

- Short AED 900
- Medium AED 1300/1600
- Long /very long AED 2300/2600



## Glamour Hair Style



- Normal Hair Style      AED 250
- Special Hair Style      AED 350
- Bridal POA      Upon Request

## Glamour Hair Treatments

- **MaxCare Mask with Serum**      AED 250  
(Rich mask for dry, dull, damage hair)
- **Olaplex Hair Treatment**      AED 280  
(Permanently rebuild damaged hair)



## Silicone Hair Treatment

Very rich treatment for weak, brittle, dry/damaged hair, it Add volume, softens, shines, straightens, a result; a healthy hair, excellent for getting rid of curly, frizzy, unhealthy, dull, mistreated hair.

- Short      AED 800
- Medium      AED 1200 / 1500
- Long /very long      AED 2000 / 2500



## Collagen with Protein Treatment

For damage, weak, pale and unhealthy hair.

- Short      AED 900
- Medium      AED 1300/1600
- Long /very long      AED 2300/2600



## Protein Hair Loss Treatment

Are you suffering from hair loss, weak, dry with no shine, protein treatment is the answer, the result is soft, shiny and healthy hair.

- |                   |               |
|-------------------|---------------|
| • Short           | AED 900       |
| • Medium          | AED 1300/1600 |
| • Long /very long | AED 2300/2600 |



## Hair Brazilian Treatment

- |                    |               |
|--------------------|---------------|
| • Short            | AED 600       |
| • Medium           | AED 1000      |
| • Long / very Long | AED 1500/2000 |



## Hair Extension 100% Natural



Celebrities regularly surprise the world with new and different hairstyles changing color, style and even the length of their hair, over the course of just a couple days. This magic is made possible with the help of hair extensions and a talented stylist.

So if you want super-long and sexy hair, with the length you desired, and volume in addition to length which is perfect for fine, limp or thinning hair or if your existing hair is at little as 3 inches long, you can get extensions, Extensions can be braided in, glue in, woven, or if you only need a follicular boost for special event, clipped in. You can also add highlights or color with shades ranging from mild to wild, to your hair with the use of extensions.

Come and experience our 100% Natural hair extension with attractive prices.